



Bloomingdale Public School

Cultivating a Community of Lifelong Learners

VOTE ON BOTH PROPOSALS BY MAY 7!

2024 BOND PROPOSALS INFORMATION

VOTING INFORMATION

When do we vote?

Tuesday, May 7, 2024
from 7:00 a.m. to 8:00 p.m.

To find your polling location or information about absentee voting, visit michigan.gov/vote.

Who can vote?

Any registered voter living in the Bloomingdale Public Schools district. To register to vote, you must be a resident for at least 30 days, at least 18 years old, and a resident of the United States.

Can I tour the buildings?

Yes! The BPS Staff will be providing dinner and tours on March 12, March 20, and March 27. To learn more, visit bdalecards-bond.com.

How do I learn more?

Visit bdalecards-bond.com for more information. Superintendent Dr. Deanna Dobbins is available to answer questions by phone at 269-521-3903 or by email at ddobbins@bdalecards.org.



PROPOSAL 1
NO EXPECTED TAX RATE INCREASE

VOTE BY MAY 7!

Absentee Ballots Available by March 28

bdalecards-bond.com



2024 BOND PROPOSALS INFORMATION

Vote by May 7! More Information Online at bdalecards-bond.com

PROPOSAL 1



\$17 Million

in bond funds would be generated from Proposal 1.

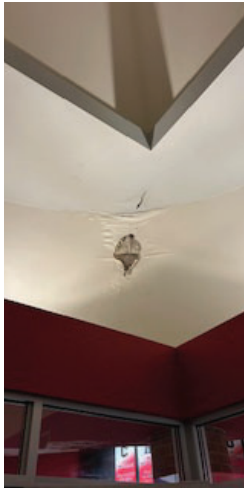


0.0 Mill Increase

The district can generate these funds with no expected increase to the current tax rate.

PROPOSED PROJECTS

- **Update Student Learning Environments at Each School**
 - » Update mechanical and electrical systems, including boiler replacements
 - » Partial replacement of windows, exterior doors and roofs
 - » ADA-necessary improvements to select toilet rooms
 - » Small district-wide technology, furniture, and finish upgrades
- **Improved Site Circulation and Repaved Lots at Each School**
- **Create a Safe + Secure Entry Experience at Each School**
 - » Office remodels
 - » Entrance canopies
 - » Add security camera
- **Add 1 or 2 Busses**



Damage from Leaking Roofs



BPS Boilers have reached the end of their useful life and require frequent repair.

PROPOSAL 2



\$15.4 Million

in bond funds would be generated from Proposal 2.



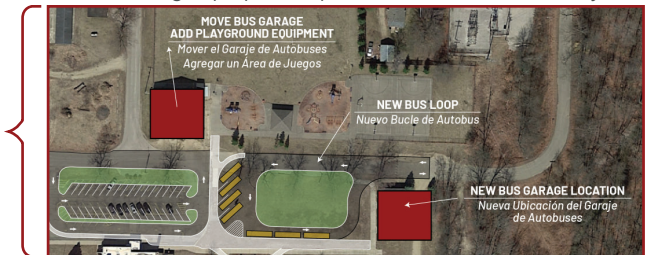
2.0 Mill Increase

The district can generate these funds with an increase of 2 mills to the current tax rate.

PROPOSED PROJECTS

- **Auxiliary Gym Addition at Bloomingdale Elementary**
 - » Remodel Existing Gym to Cafeteria
 - » Add New Bus Loop
 - » Additional Parking at Addition
- **Relocate and Remodel the Bus Garage at Pullman Elementary**
 - » Install Playground at Vacated Bus Garage
- **HVAC with Added Cooling throughout the District**

Rendering of proposed updates to Pullman Elementary



To learn more about all of the proposed projects, see visual representations of the proposed elementary changes, and utilize our tax calculator, visit

bdalecards-bond.com

IMPACT TO HOMEOWNERS

If approved by the voters, Proposal 2 would allow to district to sell bonds and generate approximately \$15.4 million with a projected 2 mill increase over the current debt millage rate. Using the average home value in our community of \$90,000, this increase would equate to approximately \$7.50 per month for the average homeowner.

Home Market Value	Home Taxable Value	Monthly Increase
\$70,000	\$35,000	\$5.83
\$90,000	\$35,000	\$7.50
\$110,000	\$55,000	\$9.16
\$130,000	\$65,000	\$10.83
\$150,000	\$75,000	\$12.50

These bond programs were developed with **input from the Bloomingdale community** and are focused on keeping BPS students **WARM, SAFE, and DRY!**